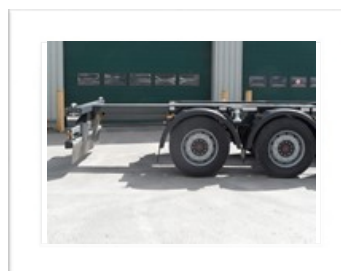
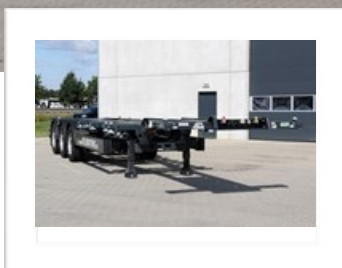
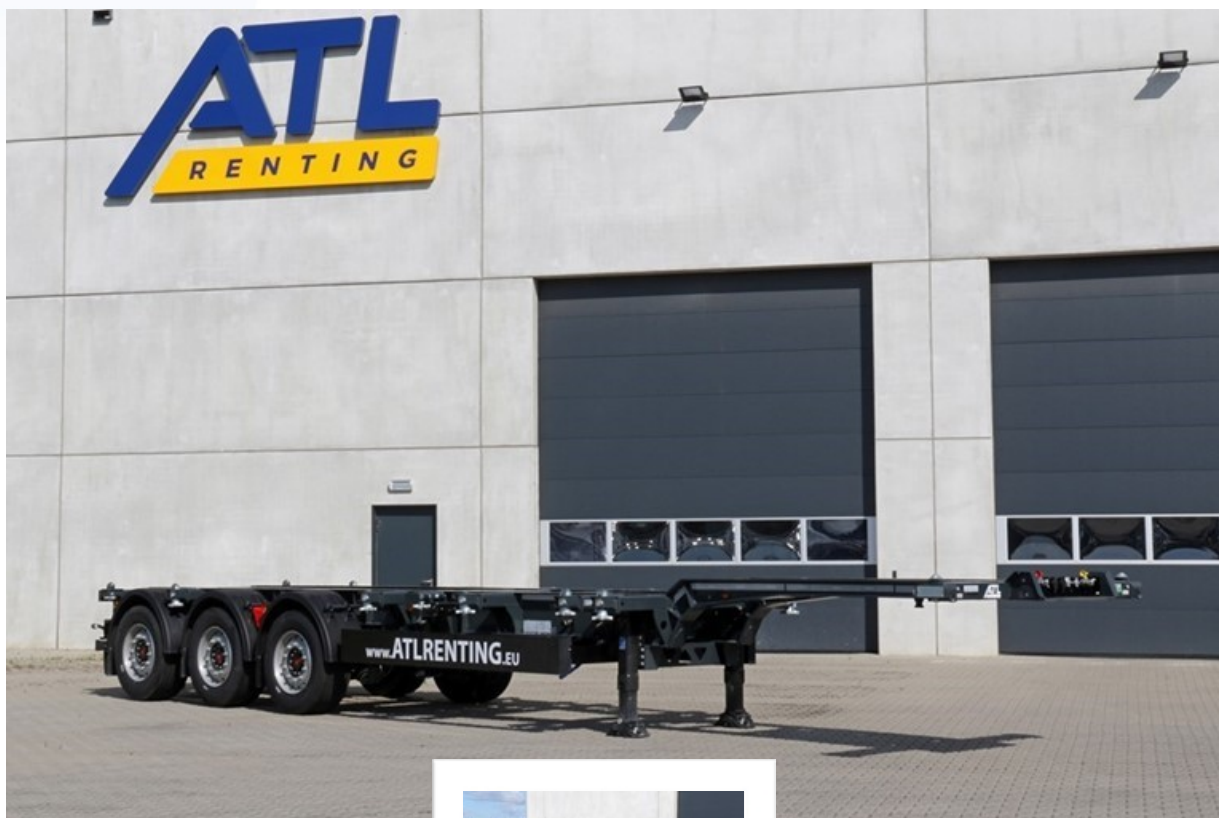




KÖGEL (PKS) 21xxx - Container chassis - 40 Simplex

TRUCKS & TRAILERS
RENTING ~ SALES ~ RENTING WITH
BUY OPTION



MORE INFORMATION

Central number

+49 (0) 202 82 010

- Pictures may differ from the mentioned specifications.
- Always subject to availability, statistics and insurance acceptance by our financial department.



TRUCKS & TRAILERS
 RENTING ~ SALES ~ RENTING WITH
 BUY OPTION

KÖGEL (PKS) 21xxx - Container chassis - 40 Simplex

WEIGHTS

- Tare weight (kg) +- 5.392

DIMENSIONS

- Length retracted(mm) +- 11.450
- Length extended (mm) +- 12.820
- Width (mm) +- 2.550
- 5th wheel height (mm) +- 1.150

CHASSIS FRAME

- Gooseneck
- Rear outrigger - pneumatically

COUPLING

- King pin 2"

LANDING LEGS

- Brand JOST
- With crank handle

AXLES

- Number 3
- Brand SAF Intradisc
- Rigid axle(s) 3 x 9.000 kg
- Lift axle(s) 1
- Air suspension
- Raise-lower valve

WHEELS AND TIRES

- Tire size 6 x 385/65 R22.5
- No spare wheel
- Steel rims - offset 120

BRAKE SYSTEM

- Disc brakes

LIGHT SYSTEM

- Multi-chamber rearlights
- LED side marker lights
- 2 x 7 pin plugs
- 1 x 15 pin plug

CONTAINERS

- 1 x 40 ft high cube
- 2 x 20 ft
- 1 x 30 ft
- 1 x 20 ft - rear
- 1 x 20 ft - central
- Tank containers not allowed!

MISCELLANEOUS

- 2 wheel chocks
- Ferry rings 2 x 4

PAINTING

- Chassis RAL 7016 - Anthracite Gray