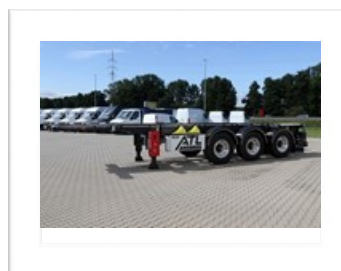




VAN HOOL (3VS/O) 21xxx - Tankcontainer chassis - 30ft / 20ft

**TRUCKS & TRAILERS**  
RENTING ~ SALES ~ RENTING WITH  
BUY OPTION



## MORE INFORMATION

**Central number**

+49 (0) 202 82 010

- Pictures may differ from the mentioned specifications.
- Always subject to availability, statistics and insurance acceptance by our financial department.



**TRUCKS & TRAILERS**  
 RENTING ~ SALES ~ RENTING WITH  
 BUY OPTION

## VAN HOOL (3VS/O) 21xxx - Tankcontainer chassis - 30ft / 20ft

### WEIGHTS

- Tare weight (kg) +- 3.450

### DIMENSIONS

- Length (mm) +- 9.653
- Width (mm) +- 2.500
- 5th wheel height (mm) +- 1.150

### CHASSIS FRAME

- Without gooseneck

### COUPLING

- King pin 2"

### LANDING LEGS

- Brand BPW S-feet
- With crank handle

### AXLES

- Number 3 x 9.000 kg
- Brand SAF
- Rigid axle(s) 3 (1.310/1.410 mm)
- Air suspension
- Raise-lower valve

### WHEELS AND TIRES

- Tire size 6 x 385/65 R22.5
- No spare wheel
- Aluminium rims - offset ET 0

### BRAKE SYSTEM

- Disc brakes

### LIGHT SYSTEM

- Multi-chamber rearlights
- LED side marker lights
- LED rear marker lights
- 2 x 7 pin plugs
- 1 x 15 pin plug

### CONTAINERS

- 1 x 30 ft
- 1 x 20 ft - central

### MISCELLANEOUS

- 2 wheel chocks
- Working platform behind 20ft (left + mid (low) + right)
- Drip tray (stainless steel)
- Working platform along drip tray
- Hose tubes 2 (diam. 160mm / Length = 6.000 mm)
- ADR - fire extinguisher
- ADR - plate
- ADR - grounding pin
- Open construction at the back
- Working platform between 30ft / 20ft

### PAINTING

- Chassis RAL 7016 - Antracite grey