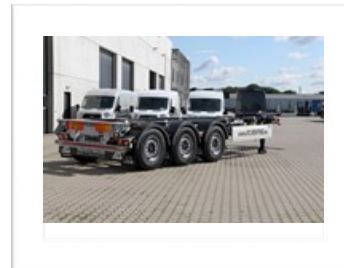
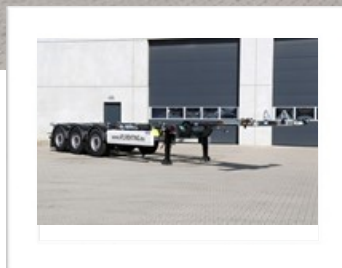




VANHOOL (5VS) - Container chassis - 45FT Backslider BX

**TRUCKS & TRAILERS**  
 RENTING ~ SALES ~ RENTING WITH  
 BUY OPTION



## MORE INFORMATION

**Central number**

+49 (0) 202 82 010

- Pictures may differ from the mentioned specifications.
- Always subject to availability, statistics and insurance acceptance by our financial department.

[www.atlrenting.eu](http://www.atlrenting.eu)



**TRUCKS & TRAILERS**  
 RENTING ~ SALES ~ RENTING WITH  
 BUY OPTION

## VANHOOL (5VS) - Container chassis - 45FT Backslider BX

### WEIGHTS

- Tare weight (kg) +- 5080

### DIMENSIONS

- Length retracted(mm) +- 10.997
- Length extended (mm) +- 13.384
- Width (mm) +- 2.540
- 5th wheel height (mm) +- 1.150

### CHASSIS FRAME

- Gooseneck
- Rear outrigger - pneumatically

### COUPLING

- King pin 2"

### LANDING LEGS

- Brand SAF
- With crank handle

### AXLES

- Number 3
- Brand SAF Intradisc
- Rigid axle(s) 3 x 9.000 kg
- Lift axle(s) 1
- Air suspension
- Raise-lower valve

### WHEELS AND TIRES

- Tire size 6 x 385/65 R22.5
- No spare wheel
- Steel rims - offset ET120

### BRAKE SYSTEM

- Disc brakes

### LIGHT SYSTEM

- Multi-chamber rearlights
- LED side marker lights
- LED rear marker lights
- 2 x 7 pin plugs
- 1 x 15 pin plug

### CONTAINERS

- 1 x 45 ft high cube
- 1 x 40 ft high cube
- 2 x 20 ft
- 1 x 30 ft
- 1 x 20 ft - rear
- 1 x 20 ft - central

### MISCELLANEOUS

- 2 wheel chocks

### PAINTING

- Chassis RAL 7016 Anthracite gray
- Other colors on demand and under restriction of stock availability