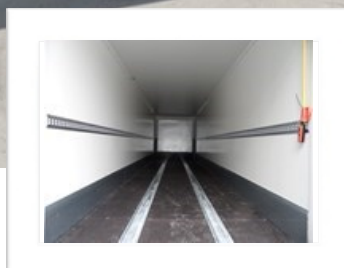
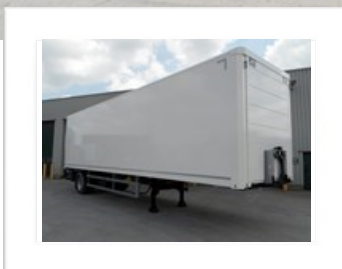




## SYSTEM TRAILERS (BQAS) - Box trailer - 1 axle - XL Certificate

**TRUCKS & TRAILERS**  
 RENTING ~ SALES ~ RENTING WITH  
 BUY OPTION



### MORE INFORMATION

**Central number**

+32 (0) 3 569 03 07

**Peter Tratsaert**

+32 (0) 496 58 97 57

**Piet Debruyne**

+32 (0) 498 12 54 07

**Bert Clabots (Intermodal)**

+32 (0) 477 67 18 69



**TRUCKS & TRAILERS**  
 RENTING ~ SALES ~ RENTING WITH  
 BUY OPTION

## SYSTEM TRAILERS (BQAS) - Box trailer - 1 axle - XL Certificate

### DIMENSIONS

- Int. length (mm) +- 11.105
- Int. width (mm) +- 2.480
- Int. height (mm) +- 2.670
- 5ft wheel height (mm) +- 1.150
- Height cantilever lift (mm) +- 2.000

### CHASSIS FRAME

- Without gooseneck

### COUPLING

- King pin 2"

### LANDING LEGS

- Brand 24.000 kg
- With crank handle

### AXLES

- Number 1
- Brand SAF
- Steering axle Tridec - 1 x 10.000 kg
- Air suspension
- Raise-lower valve

### WHEELS AND TIRES

- Tire size 4 x 275/70 R 22.5
- No spare wheel
- Steel rims - offset 120

### BRAKE SYSTEM

- Disc brakes

### LIGHT SYSTEM

- Multi-chamber rearlights
- LED side marker lights
- LED rear marker lights
- 2 x 7 pin plugs
- 1 x 15 pin plug

### FLOOR

- Phenolic plywood floor 27 mm

### BODYWORK

- Box 20 mm Plywood
- Load securing rail(s) 1 (120 cm)

### MISCELLANEOUS

- XL-Certificate EN 12642 XL
- Spare wheel carrier for 1 wheel (basket)
- Cantilever lift (without doors) 2.500 kg
- Top lid

### PAINTING

- Chassis RAL 9005 - Black
- Front side RAL 9010 - White
- Sides RAL 9010 - White
- Backside RAL 9010 - White