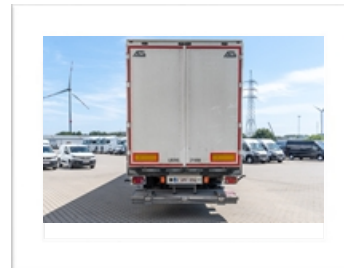
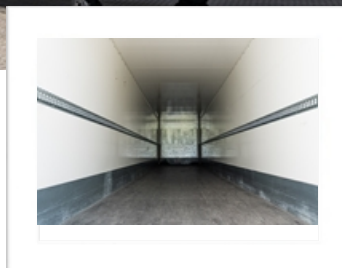




## SYSTEM TRAILERS (LB2AS) - Box trailer - 2 axles - XL Certificate

**TRUCKS & TRAILERS**  
 RENTING ~ SALES ~ RENTING WITH  
 BUY OPTION



## MORE INFORMATION

**Central number**

+32 (0) 3 569 03 07

**Peter Tratsaert**

+32 (0) 496 58 97 57

**Piet Debruyne**

+32 (0) 498 12 54 07

**Bert Clabots (Intermodal)**

+32 (0) 477 67 18 69



**TRUCKS & TRAILERS**  
 RENTING ~ SALES ~ RENTING WITH  
 BUY OPTION

## SYSTEM TRAILERS (LB2AS) - Box trailer - 2 axles - XL Certificate

### WEIGHTS

- Tare weight (kg) +- 8.240

### DIMENSIONS

- Int. length (mm) +- 13.620
- Int. width (mm) +- 2.480
- Int. height (mm) +- 2.670
- 5ft wheel height (mm) +- 1.150

### CHASSIS FRAME

- Without gooseneck

### COUPLING

- King pin 2"

### LANDING LEGS

- Brand 24.000 kg
- With crank handle

### AXLES

- Number 2
- Ridgid axle(s) 1 x 9.000 kg
- Steering axle 1 x 9.000 kg (Tridec)
- Air suspension
- Raise-lower valve

### WHEELS AND TIRES

- Tire size 4 x 385/65 R22.5
- No spare wheel
- Steel rims - offset 120

### BRAKE SYSTEM

- Disc brakes

### LIGHT SYSTEM

- Multi-chamber rearlights
- LED side marker lights
- LED rear marker lights
- 2 x 7 pin plugs
- 1 x 15 pin plug

### FLOOR

- Phenolic plywood floor 27 mm

### BODYWORK

- Box 20 mm Plywood
- Load securing rail(s) 1 (120 cm)

### MISCELLANEOUS

- XL-Certificate EN 12642 XL
- Spare wheel carrier for 1 wheel (basket)
- Slider lift 2.000 kg
- Batteries for slider lift with plug (CLANG)

### PAINTING

- Chassis RAL 9005 - Black
- Front side RAL 9010 - White
- Sides RAL 9010 - White
- Backside RAL 9010 - White

### OPTIONS

- Subject to availability